

[www.chemscientific.co.in](http://www.chemscientific.co.in)



**CHEM**  
SCIENTIFIC

Motion Sensor  
Touch Panel PC  
HVAC Instruments  
IOT & Cloud Projects  
Process Control Instruments  
Temp. Measuring Instruments  
Chromatographic Consumables  
Portable Test Measuring Instruments

### Our Mission

Our mission is to ensure that our products meet the exact needs of our customers. Besides we at Chem Scientific also provides value added services to our customers to enhance their profitability & growth



# Now Achieve True Zero Liquid discharge with



Industrial Water Evaporators

**HIGH-EFFICIENCY  
ADVANCED VACUUM  
CONCENTRATORS**

#savewater

#reusewater

**WASTEWATER  
REDUCTION & REUSE**

Volume reduction up to



**99%**

**QUICK-OPENING  
SYSTEM  
+  
INNOVATIVE  
HEAT-EXCHANGERS**



  
**MADE IN  
ITALY**



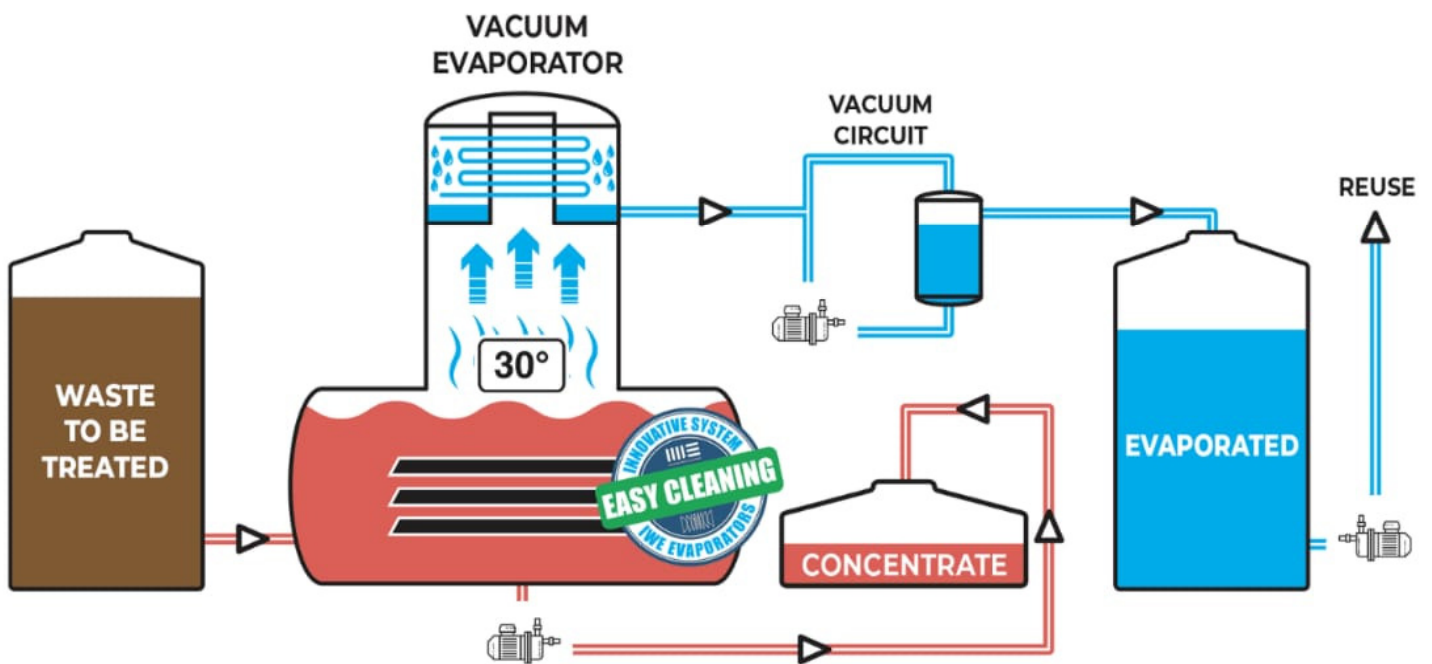




THROUGH VACUUM EVAPORATION IT IS POSSIBLE TO SEPARATE A NON-VOLATILE COMPOUND DISSOLVED IN A SOLUTION WITH LOW OPERATING COSTS IN ORDER TO OBTAIN DEMINERALIZED WATER AND A CONCENTRATED PRODUCT.

CONCENTRATION  
PRODUCT ENHANCEMENT  
HIGH CHEMICAL RESISTANCE  
INNOVATIVE INTERNAL CLEANING SYSTEM

SEPARATION BY EVAPORATION  
RECOVERY OF AQUEOUS SOLUTIONS  
MAXIMUM RELIABILITY  
EASY OPENING OF THE BOILER



## STANDARD HEAT EXCHANGER

*Immersed Coil or Tube Bundle*



## HEAT EXCHANGER

*IMMERSE PLATES*



## Portable / Test / Measuring Instruments



Moisture Balance



Online Moisture Meter



Mobile Thermal Imager



Vibration Meter



Hot Plate with Magnetic Stirrer



Water Bath



Ultrasonic Bath



Universal Calibrator



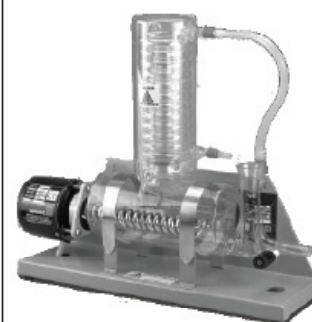
Ph/TDS Meter



Fluid Property Analyzer



Heating Mantle



Water Distillation Unit



Bomb Calorimeter



Laboratory-Centrifuge



BOD/Cod Analyzer



Electronic Weighing Scale



Nitrogen Evaporator



Hot Air Oven



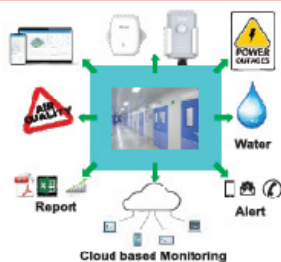
Viscometer



Temperature and Humidity Calibrator



## IOT & Cloud Projects



Kled measurement provides end to end plug & play ambient & humidity monitoring to help smartly manage their temp. Controlled environments. It can be server rooms, storage of food or medical items, panels for industrial processors or drives, office etc. The software IO sense makes the life of user easier with smart alerts, automated reports, trends visualization etc. To help him with optimization of losses caused due to high or low temp. & humidity.

### Touch Panel PC

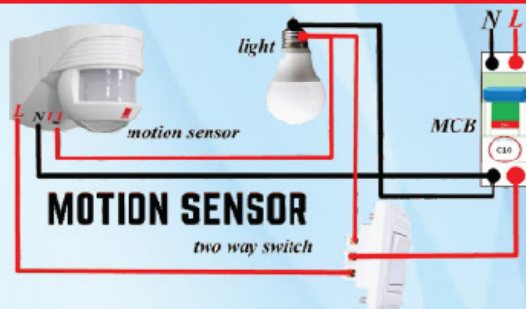


Capacitive Touch Screen



Industrial PC Box

### Motion Sensor



Sensor used to save energy in any office

## HVAC Instruments



Diff. Pressure Gauge



Diff. Pressure Switch



Diff. Pressure Transmitter



Single Use Data Logger



Flow and Air Velocity (Handheld)



Humidity and Temperature (Handheld)



Thermohygrometer



1-2 Channel Data Loggers



Flow and Air Velocity (Online)



Humidity and Temperature (Online)



O<sub>2</sub> / CO<sub>2</sub> Transmitter



8/16/24 Channel Data Loggers



**CHEM  
SCIENTIFIC**

Quality Products & Quality Services

## Temp. & Humidity Transmitter

Chem Scientific introduce SETH-56 an Imported Sensor measuring unit and high strength metal sintered filter cap can not only filter out dust, but also ensure high humidity air circulation. We do provide water proof connector. The Aluminium alloy metal shell is treated by Oxidation, and electrolysis, and the shell is non Conductive, dust proof, anti corrosion, anti pollution, anti interference.

### Technical Highlights

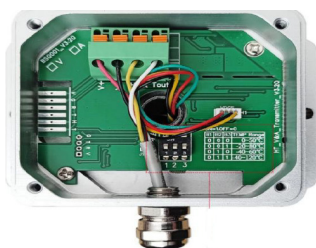
- Easy to Clean
- Dustproof
- Long Life of Sensor
- Std. Cable 1mtr. (customization possible)
- Aluminium Alloy Explosion Proof
- High Temp. Resistance shell
- Non Conductive
- Anti - Corrosion
- Anti - Pollution
- Anti - Interference
- Wall / Pipeline Mounted
- Professional custom

### Temperature and Humidity Transmitter



### Specifications

Model number	: CS-TH – (SUFFIX)
Type	: Temperature sensor
Brand name	: Chem Scientific
Output	: 0.5V; 0-10V
Description	: Industrial Temperature sensor
Size	: 200*15.7mm
Color	: Silver
Temperature Range	: -40~120 C (Dial code Setting range )
Humidity Range	: 0~99% RH
Power Dissipation	: <10mA
Mounting brackets	: Matching gift metal bracket
Material	: High temperature aluminium alloy
Extension cord	: Default 1M (Line length can be customized)
Installation method	: Pipeline and wall-mounted



[www.chemscientific.co.in](http://www.chemscientific.co.in)



**CHEM  
SCIENTIFIC**

**Quality Products & Quality Services**

## Air Velocity

"The eighth generation of independent research and development technology core body" ----- professional customization of various occasions use requirements \*Civil air defense is special \*High precision and stability of isolation protection circuit \*Long service life \*Dual calibration.

Suitable for ambient temperature 600°. Construction site can be set according to the size of the pipeline air volume, multiple output, alarm output, isolation protection. Double power source integration, the reaction rate is adjustable, can be adjusted online precision.

### Technical Highlights

- Independent Research & development of the core
- Resistance to Jump
- The Condensation
- Measurement Precision
- Turbulent flow processing
- Wide Range
- Isolating service
- Corrosion Resistance temperature
- Dustproof
- Dual Calibration
- Installation is Simple
- Professional custom



### Specifications

Model Number	: CS-AF410A9
Usage	: Wind speed measuring
Theory	: Thermal film sensor
Output	: Digital Sensor
Brand	: Air volume anemometer
Amplifier Type	: Analog Output
Voltage – Supply	: 12VDC/AC, 24VDC/AC
Output Type	: 0-10V/4-20mA, RS485/RS232
Operating Temperature	: -50-+600°C
Mounting Type	: Stainless steel flange
Package / Case	: ABS
Frequency	: 0.1s
Output Configuration	: RS485/RS232
Humidity Range	: 100%
Size / Dimension	: Rod diameter 14mm, rod length: 400mm customizable)
Measuring Range	: 0-30m/s conventional, 0-100m/s customizable
Resolution	: 0.01
Accuracy	: FS0.02%
Interface	: Digital
Protection level	: IP-65
Voltage – Max	: 12VDC/AC, 24VDC/AC
Application	: Industrial Automation





**C H E M**  
SCIENTIFIC

Quality Products & Quality Services

# Touch Screen Monitor

## Capactive Type Touch Screen Monitor



Product Name	: Industrial Monitor
Size	: 21.5cm (Upto)
Brand Name	: Chem Scientific (Addire)
Model	: YT-215 - _ _ _
Colour	: Black
Material	: Metal Case

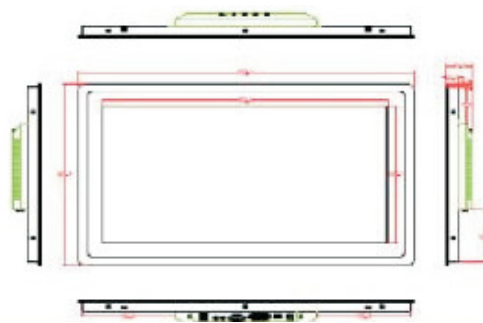
### Features

- Multi Touch Function for choosing 4 wire resistance capacitance etc.
- Standard VGA Interface, HDMI, AV, Can connect to computer, Industrial PC, Camera & Other devices
- Has Variety of Installation methods like:- wall mount, table top, hanging wall embedded rack mount.
- Anti – Interference hardware shell, anti static magnetic field from interference.
- New imported LCD screen, have higher contrast and long working time

### Display Parameters

Case	: All Metal Panels, anti vibration, tamperproof	LCD Colour	: 16.7M colours
Resolution	: 1920 X 1080	Display Contrast	: 1000:1
Brightness	: 50cd/m <sup>2</sup> (type)	Working Humidity	: 5% - 95%,
Display Ratio	: 16:9	Working Temp.	: -10°C – 50°C
Installation	: Desk stand, embedded, wall mount	Storage Temp.	: -20°C – 60°C

Optional Model	Functional Configuration
YT215 - O	VGA + HDMI + AV
YT215 - OG	VGA + HDMI + AV + Glass
YT215 - OR	VGA + HDMI + AV + Resistive touch
YT215 - OC	VGA + HDMI + AV + Capacitive touch



[www.chemscientific.co.in](http://www.chemscientific.co.in)

DA9, 1<sup>st</sup> floor, Shakarpur Ext. Main Vikas Marg, Delhi – 110092  
9868741600 / sales@chemscientific.co.in





**CHEM  
SCIENTIFIC**

Quality Products & Quality Services

Intel Core i5-7200U processor inside & Intel 210AT Gigabit Ethernet

## Industrial Computers

FIREWALL | VPN | NETWORK SERVER | ROUTER



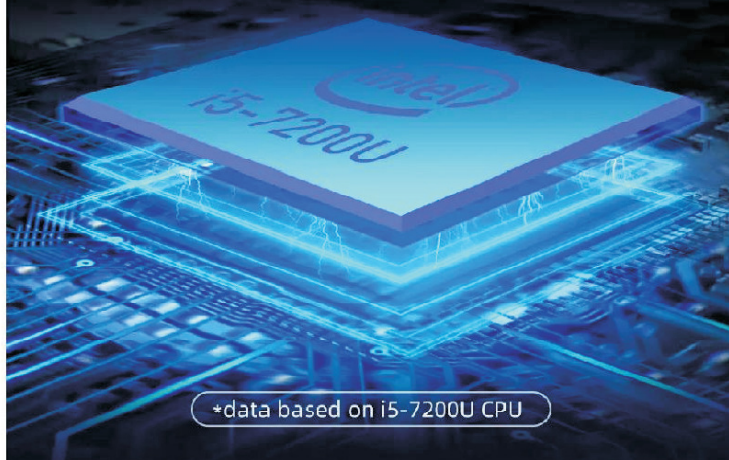
## Intel Processors, Faster Computing

Enterprise routing solution, Easily enabling you manage 300 IP network traffic

**300P**  
Admin

**2.5GHz**  
Max 3.10GHz

**2 Cores**  
4 Threads



\*data based on i5-7200U CPU

## Industrial PC

Industrial PCs are designed to operate in harsh environments with shock and vibration resistance, long term availability, connectivity, security and expandability.



### Low – end Mini PC

Processor : Intel Pentium J5005 Quad-Core Processor

Memory : 4GB DDR 4RAM

Storage : 128GB Solid State Drive

Graphics : Intel UHD Graphics 605

Connectivity : 802.11ac Wifi, Bluetooth 5.0

### High – end Mini PC

Processor : Intel Core 17-9700F 8 Core Processor

Memory : 16GB DDR 4RAM

Storage : 512GB Solid State Drive

Graphics : NVIDIA GeForce GTX1650 4GB GDDR5

Connectivity : 802.11ac Wifi, Bluetooth 5.0

### Applications:

Data Acquisition  
Industrial Network  
Human Machine Interface  
Monitoring / Communication  
Automation / Control Systems

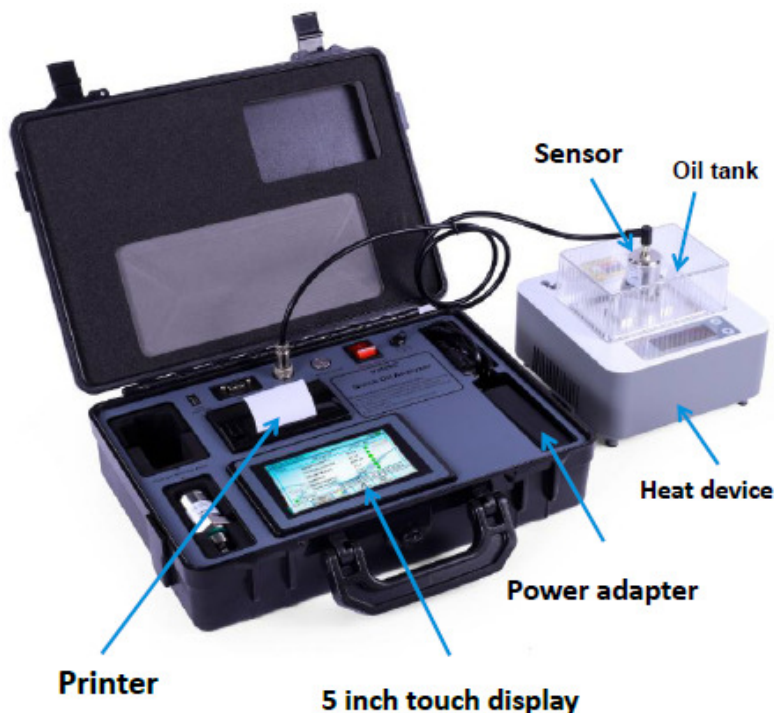
[www.chemscientific.co.in](http://www.chemscientific.co.in)

DA9, 1<sup>st</sup> floor, Shakarpur Ext. Main Vikas Marg, Delhi – 110092  
9868741600 / sales@chemscientific.co.in

The portable quick oil analyzer KLED-15 is equipped with a 5-inch touch screen display, rechargeable lithium battery supports 4 hours of work, heat device can make oil samples at constant temperature upto 100°C. for oil viscosity analysis. KLED-15 can help you quickly perform oil analysis on site, and facilitate the on-site printing of test results records. The durable design of the portable suitcase is user friendly, convenient and easy to operate.

## Typical Applications

- ✚ Predicative maintenance & On-site engineering service
- ✚ Hydraulic equipment & system manufacturers
- ✚ Military equipment applications
- ✚ Research & testing institutes
- ✚ Offshore & power generation
- ✚ Construction machinery
- ✚ Industrial plant
- ✚ Marine



## Features

Test time	: 15 seconds
Oil sample volume	: ≥10ml
Test parameters	
Viscosity	: 1~500cSt; Accuracy: 5~10%
Density	: 600~1250kg/m³; Accuracy: ±2%
Oil Quality (Dielectric)	: 1-6 level Accuracy: ±5%
Temperature	: 0~100° C; Accuracy: ±0.5° C
Water content (Optional)	: 0-20%; Accuracy: ±0.5%
Water activity (AW) (Optional)	: 0~1 aw; Accuracy: ±0.03AW
Moisture content (Optional)	: 0-2000 ppm; Accuracy: ±10% or 10ppm
Working hours	: Built-in batteries for 3~4 hours working
Built-in printer	: Convenient print to test report
Interface display	: Main menu: test results, upper/lower limit set, start testing, test report print; Trend: change trend of each parameter over a period of time, test records export Sample: name for oil sample, oil samples management System: time setting, software update, shutdown
RS232 port	: Modbus RTU communication protocol
USB port	: Export test records, software update
Storage	: 32G memory, can store 100K records
Power supply	: DC 25.2V, 2A
Dimension	: 387*289*104 mm
Weight	: 3KG



**On-line KLF4-4 particle counter sensor** is developed based on the light blockage method method (photoresistance method) principle, which is used for on-line real-time monitoring of particle pollution in the oil circuit of hydraulic system. It can be widely used in aerospace, aviation, electric power, petroleum, chemical industry, traffic, port, metallurgy, machinery, automobile manufacturing, etc. Detect the oil pollution of solid particle in the hydraulic oil, lubricating oil, transformer oil, insulating oil, turbine oil, turbine oil, gear oil, engine oil, kerosene, water-based hydraulic oil, and detect the particles impurities of organic liquid, polymer solution.

## Application:

- Oil pollution degree detection
- includes hydraulic oil
- aviation kerosene
- lubricant oil
- transformer oil (insulation oil)
- steam turbine oil,
- gear oil,
- engine oil
- water-based hydraulic oil
- and many more



## Specifications

Light Source	: Semiconductor Laser
Testing range	: 1~100μm or 4~70μm ©
Sensitivity	: 1μm (ISO4402) or 4μm (C) (ISO11171)
Testing Channel	: Build-in standard GJB420A-96, GJB420B-06, NAS1638, ISO4406 standard, etc.
Particle size range	: 1μm, 2μm, 5μm, 10μm, 15μm, 25μm, 50μm, 100μm; 4μm(c), 4.6μm(c), 6μm(c), 10μm(c), 14μm(c), 21μm(c), 38μm(c), 70μm©
Accuracy	: ±0.5 pollution degree
Online pressure	: 0~10MPa; 0~40MPa (should with pressure reducing valve)
Detection flow speed	: 50~300mL/min
Oil temperature	: <80°C
Environment Temperature	: -30°C~60°C
Storage temperature	: -55°C~80°C
Power	: DC 9V, 1000mA
Size	: 100mm*75mm*71mm( L * W * H )
Humidity	: Work under relative humidity 20%~85%, no condensation, storage humidity 98%
Interface mode	: Standard high pressure hose; Optional internal Dia.4mm and external Dia.6mm low pressure hose



# Online Moisture Meter



## OTHER APPLICATIONS INCLUDE

### Wood Products

Hog Fuels  
Fiberboard  
Hardboard  
Particle board  
Oriented Strandboard  
Medium Density Fiberboard

### Food Products

Coffee  
Cereals  
Starches  
Pet Foods  
Milk Powder  
Snack Foods  
Cookies & Crackers  
Soya Bean & Corn Meals

### Tobacco Products

Expanded  
Whole Leaf  
Cut / Stems  
Lamina Strips  
Reconstituted  
Chewing Tobacco

### Paper Converting

Hot Melts  
PVB Films  
Re-moisturizing  
Extruded Plastics  
Carbonless Coatings  
Moisture & Coat weights  
Pressure Sensitive Adhesive

### Chemicals & Minerals

Ores  
Ceramics  
Fertilizers  
Plastic Chips  
Crumb Rubber  
PVC Powders  
Detergents and Soaps

## A Reliable, Rugged and Accurate Transmitter

Kled-70 measurement produces analog & digital outputs for control. An Ethernet interface is available as an option. The MT56 is made up of 5 basic components: a quartz halogen lamp, a filter wheel motor, multiple NIR interference filters in a rotating filter wheel assembly, a Lead Sulfide detector and a single "smart" circuit board. The MT56 is fully modular – each of these components can be replaced in the field within minutes.

## The Near Infrared (NIR) Operating Principle

Light from the lamp is directed through the rotating, narrow band-pass NIR filters. The filters separate the light into NIR wavelengths, selected specifically by PSC for the measurement and application being performed. The NIR light is then directed onto the product being measured, normally on a conveyor belt or moving web.

Subsequently, the light reflected off of the product is captured by a mirror and focused onto a lead sulfide detector. The detector's microvolt output is then taken by the on-board "smart" circuit board & converted into percent moisture or other engineering units.

## KLED70-SA

### Stand Alone Configuration

- Connects directly to host computers
- No Operator Interface required
- Powered at the MT56 Transmitter
- All Analog Outputs, Digital and Ethernet interfaces directly from the Transmitter
- 5.7" Operator Interface/Display (optional)

## Stand Alone Configuration



## KLED70-SA

### System Configuration

- Transmitter connects to Operator Interface
- Transmitter powered from Operator Interface
- All Analog Outputs, Digital and Ethernet interfaces from Operator Interface
- Large 5.7" high resolution Touchscreen

## System Configuration







# Online Moisture Meter

## Specifications: KLED 70-P

<b>Measured NIR Constituents:</b>	1, 2 or 3 simultaneously
Moisture Range:	Min. 0.1%, Max. 95%
Coatings Range:	Min. 0.1gr./m, Max. 200 gr./m
<b>Accuracy: (subject to application and product type)</b>	
Moisture	+/- 0.1%
Coatings	+/- 0.1 gr./m
Repeatability:	+/- 0.2%
Product Distance:	6-14 inches (150-350mm)
Calibration Codes:	50
Response Time:	1-999 seconds (User Selectable).
Power:	90-260VAC, 50/60 Hz, 40 watts
Outputs:	4-20mA, 0-10V (isolated), RS-232 & RS485
Weight/Enclosure:	7.9kg/IP67, Cast Aluminum/Pressed Steel
Ambient Temperature:	0-55 °C (32-131°F) with water 84°C (183.2°F) with air cooling
Air Purge:	Available

## Specifications: Operator Interface

Display:	5.6 inch Color Touchscreen
Languages:	User Selectable
Power:	90-260 VAC 50/60 HZ
Cable:	10 ft (3 meters) standard
Enclosure:	Cast Aluminum
Wi-Fi Transfer:	Optionally available

## Maintenance:

Warranty:	24 months
Routine Cleaning:	Not Required
Calibration Verification:	Calibration Check Standard
Cooling:	Available

## Databus & Software Interfaces:

Optional Bus Interfaces:	ProfiNet, ProfiBus, Ethernet IP Modbus TCP, DeviceNet
Software:	Window-based Stand-alone Program or OPC-DDE Server

[www.kledmeasurement.com](http://www.kledmeasurement.com)





**ELECTRICAL  
SAFETY AUDIT**

**Fire Audit**

**GREEN AUDIT  
FOR NAAC**  
For Academic Institutions

**WATER AUDIT**

Electricity  
Transport  
Emissions  
Offsets  
Waste  
Water  
Fuel  
Gas  
Recycling  
**Carbon Footprint Study**

**Environment & Management  
Services as per ISO**

**Thermography  
Study**

**ENERGY AUDIT**  
analysis  
efficient  
assessment  
power  
energy  
flow  
output  
input  
cost  
carbon footprint  
energy consumption  
energy saving  
energy conversion  
energy audit  
energy management  
energy efficiency  
energy conservation  
energy performance  
energy benchmarking  
energy monitoring  
energy reporting  
energy certification  
energy labeling  
energy disclosure  
energy transparency  
energy accountability  
energy responsibility  
energy sustainability  
energy resilience  
energy security  
energy justice  
energy equity  
energy inclusion  
energy participation  
energy collaboration  
energy partnership  
energy alliance  
energy coalition  
energy network  
energy platform  
energy ecosystem  
energy community  
energy ecosystem  
energy community  
energy ecosystem  
energy community

**ENERGY IS LIFE**



**ALL AUDITS BY  
CERTIFIED AUDITORS**



**Manvi Control & Engineers**

**Solution beyond engineering !!!**

Gali No. 9, Bachan Singh Colony, Muzaffarnagar, 251001 UP

6397574001 \* manvicontrolengineers@gmail.com

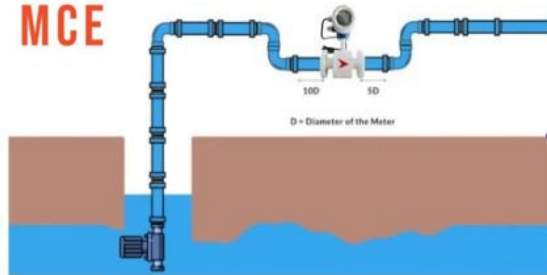




• Remote monitoring/Control

• Web portal or mobile app

• Alert at your finger tips



**FLOWLINC V1  
IOT EDGE DEVICE**

LAN LoRa,



GSM (5G, 4G), Wi-Fi,  
BLUETOOTH,

NBLoT & GPRS

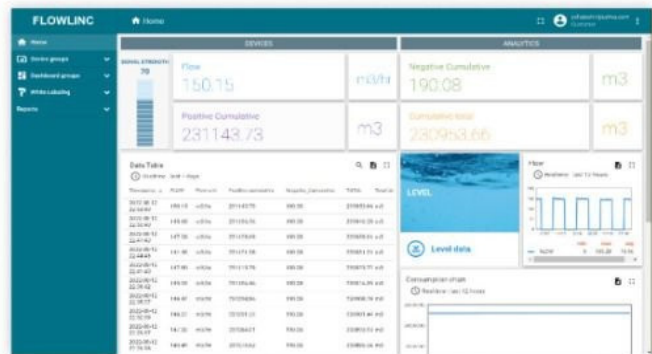
## Water telemetry Compliance Management for Groundwater

### Regulatory Compliance Reports

Meet regulatory compliance across geographies with support for CPCB, CGWA (India), DMR reporting directly to the state.

### Violations & Anomaly Detection

Automated violation and anomaly detection engine of our water monitoring system helps you identify deviations and potential non-compliance. Pre-build rules and support for global regulations.



## Temperature & Humidity Management



Monitor temperature & humidity in real-time

Protect your temperature critical assets

Automated alarm notification based on real-time temperature & humidity data for timely actions



### Applicable Areas

Cold storages & temperature critical process

Ambient condition monitoring for hotels, hospitals, educational institutes, commercial complexes

Maintaining regulatory compliances

Creating transparency in the supply chain



**Manvi Control & Engineers**

**Solution beyond engineering !!!**

Gali No. 9, Bachan Singh Colony, Muzaffarnagar, 251001 UP

6397574001 \* manvicontrolengineers@gmail.com



- Non Contact Moisture Meter (NIR based)
- On line Pyrometer, Temp. Sensors, Thermal Camera.
- Moisture Balance.



- Incremental, absolute and SIL Encoders
- Slip Rings / Optical fibre module
- Protective housing & Pendulum mechanism for encoders



- Pressure / Melt / Humidity Transmitters
- Absolute Linear / Angular Displacement Transducers
- Power Regulators / Solid State Relays / Load Cells



- Pressure & Temperature Transmitter
- Ultrasonic & Radar type Level Transmitter
- High Accuracy Calibration Instruments



- PID Controllers / Data Logger / Signal Isolator
- Pressure / Diff. Pressure Transmitter
- Mass / Vortex type flow Meters



- Pr. & Vacuum Gauges (diaph., with or without gyl. filled)
- Bimetal, Gas filled Temp. Gauges (Stem / Capillary type)
- Pressure Switches / Diff. Pressure Switch



- RTD, Thermocouples sensors and cables (upto 1200°C)
- Temp. Calibrators -40 to 1700°C (Contact & Non Contact)
- Furnace Monitoring Camera (Steel, Glass, Cement, Power)



- Free Float Level Switch / Side Mounted Level Switch
- Magnetic Level Indicator / Reflex Level Gauges
- Low Fuel Level Sensor / Water Level Controller



**Test and Measuring / Condition Monitoring Instruments**

Bomb Calorimeter



Thickness Display



Digital Insulation Tester



Digital Micro Ohm Meter



Earth Resistance Tester



Flue Gas Analyzer



Power, Harmonics Clamp Meter



RPM Meter



Thermal Imager



Vibration Meter



Air Velocity



Universal Calibrator







ENTERPRISES

Quality Services & Quality Product



Since 2002

Manufacturing Range

ENTERPRISES

PEC

Temperature Elements & Thermowells are manufactured at our Faridabad workshop which is established under technical collaboration with M/s. Acryon Engineering. PEC make High quality elements / sensors are proven for its precision, reliability, safety and high product life cycle in worldwide onshore and offshore industries.



**RTD:** Simplex / Duplex type MI RTD Assemblies, Multipoint RTD, Nickel wire RTD, RTD with Temperature Transmitter, Skin type RTD Assemblies, Bearing Temperature Measurement RTD, Room Temperature Measurement RTD, Retractable Telescopic RTD

**Thermocouple :** J, K, E, T, N, R, S, B type thermocouples, simplex / duplex / triplex element MI Thermocouples, MI Thickwall Thermocouples, MI Tube Skin Thermocouple Assemblies, Multipoint Thermocouple Assemblies, Special Thermocouple Assemblies

SS316, SS321, Inconel 600 Sheath & Weatherproof, Flameproof, EX-Proof enclosures (ATEX certified)



Thermowells

**Types:** Bar stock threaded, Type, Bar Stock Flanged, Bar stock weld-in type, fabricated threaded, fabricated flanged, fabricated weld-in, Sleeved / Lined (alloy material / PTFE / others) Solid Sintered Tungsten carbide thermowells, silicon carbide protecting thermowell, Vanstone type (shell design) thermowells, etc.

**Material:** Manufactured from forged bar stocks / Pipes, thermowells are available in Carbon Steel (A105), SS304, SS304L, SS310, SS316, SS316L, SS446, SS410, SS317, SS317L, SS321, Monel, Hastelloy, Inconel, Incolloy, Titanium, Tantalum, Nickel, Kanthal, Kanthal APM, etc.

**Instrument Cables:** Signal, control and thermocouple extension / compensating cable with PVC or LDPE insulations, PVC sheathed, shielded / unshielded, armoured / unarmoured and overall PVC or FRLS sheath cables are offered. Conductor diameters are as per customer requirements.



DA-9, 1st floor, "ENKAY HOUSE",  
Shakarpur Ext., Vikas Marg, Delhi 110092

Vivek Gupta (9868741600)  
e-mail: [pecenterprises@gmail.com](mailto:pecenterprises@gmail.com)



# DRAMINSKI GMM mini

## GRAIN MOISTURE METER

USB connection



internet calibration



### MEASURING CHAMBER

- EXTREMELY STRONG - MADE FROM METAL
- FAST AND ACCURATE MOISTURE MEASUREMENT OF THE WHOLE GRAIN
- DIGITAL TEMPERATURE SENSOR - THE HIGHEST ACCURACY OF MEASUREMENT

### FUNCTIONS

- QUICK UPDATE OF SPECIES WITHOUT NECESSITY TO SEND THE DEVICE TO THE SERVICE
- AUTOMATIC TEMPERATURE COMPENSATION
- POSSIBILITY TO MODIFY THE RESULTS

### KEYBOARD AND MENU

- DURABLE, LIFECYCLE OF 5 000 000 KEY PRESSES
- ERGONOMIC AND INTUITIVE
- RESISTANT TO CONTAMINATIONS
- MULTILINGUAL AND INTUITIVE MENU
- FULL RANGE OF AVAILABLE SETTINGS OF OPERATING PARAMETERS



### GRAPHIC DISPLAY

- ENERGY SAVING LED BACKLIT DISPLAY ENABLING READING THE RESULTS IN ANY CONDITIONS
- LARGE AND LEGIBLE MOISTURE MEASURING RESULTS
- SHOW COMPLETE NAMES OF GRAIN, TEMPERATURE, AVERAGE MEASUREMENT AND CURRENT BATTERY LEVEL

### CASING

- MADE FROM HIGH QUALITY ABS
- DESIGNED TO FIT SECURITY IN THE HAND
- INCLUDES DISPENSER WHICH ENABLES PROPER MEASUREMENT OF THE SAMPLE

### USB PORT

- THE DEVICE IS KEPT UPDATED AFTER MANY YEARS OF USE
- EASY SOFTWARE UPDATE
- SELF-DIRECTED UPDATE OF MOISTURE CURVES

Bean 5.0% – 35.0%  
Blue lupine 5.0% – 35.0%  
Buckwheat 5.0% – 35.0%  
Canola 4.0% – 30.0%  
Chickpeas 5.0% – 35.0%  
Common wheat 7.2% – 35.0%  
Field peas 7.8% – 35.0%  
Flax 5.4% – 20.5%  
Green Coffee Arabica 5.5% – 40.0%  
Green Coffee robusta 6.0% – 40.0%  
Horse bean 7.9% – 35.0%

Husked sunflower seeds 6.0% – 25.0%  
Maize 30.0% – 43.0%  
Maize 8.0% – 30.0%  
Millet 4.0% – 18.6%  
Mustard 5.0% – 35.0%  
Oats 5.0% – 35.0%  
Parchment coffee Arabica 12.0% – 38.0%  
Pea 8.0% – 33.0%  
Perennial ryegrass 6.4% – 22.0%  
Red clover 5.0% – 35.0%  
Rice brown 8.0% – 23.8%

Rice milled 11.8% – 18.0%  
Rice paddy 8.0% – 35.0%  
Rye 8.0% – 35.0%  
Sorghum 5.0% – 35.0%  
Soya 7.5% – 28.8%  
Spring barley 9.2% – 36.2%  
Sunflower seeds 5.0% – 35.0%  
Triticale 7.4% – 35.0%  
Variety wheat 7.3% – 35.0%  
White clover 4.8% – 35.0%  
Yellow lupine 5.0% – 35.0%

**Important!** If you have our GMM mini you can activate new calibrations not mentioned on the grain list above. For this purpose, please contact us.

PROUDLY  
MADE IN POLAND

**DRAMINSKI®**  
ELECTRONICS IN AGRICULTURE

[www.draminski.com](http://www.draminski.com)



**ENTERPRISES**

Quality Services & Quality Product

DA9, 1st floor, Shakarpur Ext., Vikas Marg, Delhi-92  
pecenterprises@gmail.com / 9868741600